



THE GOLFER'S GUIDE





SCOTLAND'S GOLF COAST



* Stay & Play Packages Offered
See page 6 for more information.

SCOTLAND'S GOLF COAST

Scotland's No1 Golf Destination	4
Why Golfers Choose Scotland's Golf Coast	5
Stay & Play Golf Packages	6

ACCOMMODATION

The Lodge at Craigielaw *	7
Garleton Lodge *	8
The Leddie *	9
North Berwick Golf Lodge *	10

Archerfield	11
Marine North Berwick	12
No. 12 Hotel & Bistro	13
Papple Steading	14
The Dean	15
The Dolphin Inn	15
Dunmuir Hotel	16
Seaholm / East Sands	16
18 Holes of History on The Coast	18

GOLF COURSES

Archerfield Links	20
Craigielaw Golf Club	21
Dunbar Golf Club	22
Gifford Golf Club	23
Glen Golf Club	24

Gullane Golf Club	25-26
Kilspindie Golf Club	27
Longniddry Golf Club	28
Luffness New Golf Club	29
Muirfield	30
The Musselburgh Golf Club	31
Musselburgh Links, The Old Course	32
North Berwick Golf Club	33
Royal Musselburgh Golf Club	34
The Renaissance Club	35
Winterfield Golf Club	36
More Than Golf On The Coast	37

SCOTTISH BORDERS AND NORTHUMBERLAND

Why Golfers Choose the Scottish Borders and Northumberland	39
Marshall Meadows Manor	40
Bamburgh Castle Golf Club	41
Dunstanburgh Castle Golf Club	42
Eyemouth Golf Club	43
Goswick Golf Club	44
Partners	45
Transport Providers	46
How to find us	47
Map - East Lothian	48
Map - Borders & Northumberland	49

SCOTLAND'S N^o1 GOLF DESTINATION

Golf has been played on Scotland's Golf Coast for centuries. From Musselburgh Old Links in 1672, to the Women's Open in 2022.

It is no surprise that East Lothian has the greatest concentration of Championship links golf courses in the world.

In recent years, Scotland's Golf Coast has welcomed the world's best golfers to East Lothian, hosting the Scottish Women's Open six times, the Women's Open, the Scottish Senior Open five times, the World Hickory Open and is now the confirmed Home of the Scottish Open (until at least 2026).

Scotland's Golf Coast stretches east from Scotland's capital, Edinburgh for 30 miles along the Firth of Forth, through East Lothian's stunning coastline, golden beaches and rolling countryside.





WHY GOLFERS CHOOSE SCOTLAND'S GOLF COAST

- ▶ With 21 courses, the region is perfect for golfers of all abilities and for all budgets
- ▶ East Lothian is Scotland's sunniest and driest region
- ▶ A mix of links and well-draining parkland courses make golf possible 365 days a year
- ▶ East Lothian is Scotland's Food and Drink County
- ▶ All East Lothian courses are within 30 minutes of each other, and those in the Borders and Northumberland are around an hour away
- ▶ All East Lothian courses are within 30 minutes of each other, and those in the Borders and Northumberland are around an hour away
- ▶ The towns of Aberlady, Gullane, Dunbar and North Berwick have an array of pubs, bars and restaurants
- ▶ The selection of accommodation is extensive – from golf resorts, 5-star hotels, bed & breakfasts to self-catering

STAY & PLAY GOLF PACKAGES



A number of our accommodation providers offer Stay & Play packages –

The Lodge at Craigielaw (page 7)

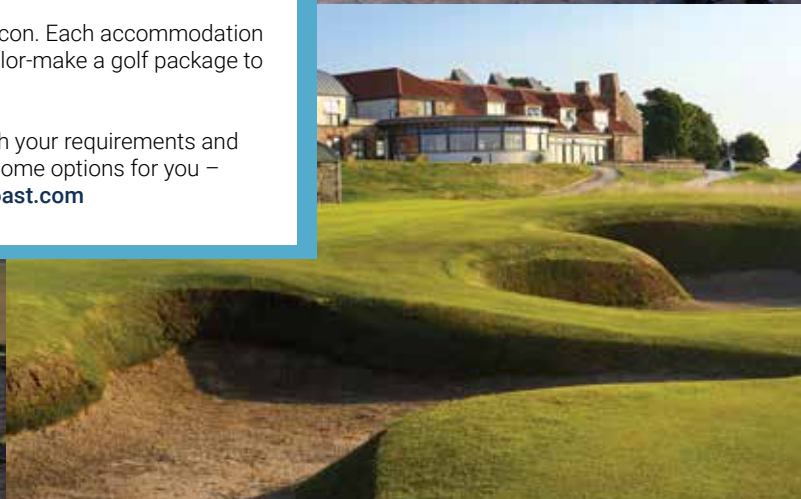
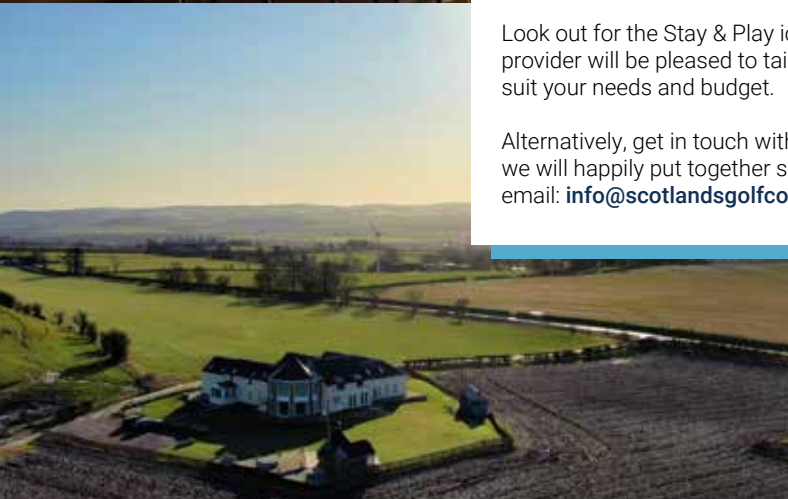
Garleton Lodge (page 8)

The Leddie (page 9)

North Berwick Golf Lodge (page 10)

Look out for the Stay & Play icon. Each accommodation provider will be pleased to tailor-make a golf package to suit your needs and budget.

Alternatively, get in touch with your requirements and we will happily put together some options for you – email: info@scotlandsgolfcoast.com



THE LODGE AT CRAIGIELAW



For golf aficionados and non-golfers alike, the Lodge at Craigielaw is a great base on Scotland's Golf Coast. From the comfortable bedrooms to the 1st tee is a mere two-minute walk. There are 30 bedrooms in total with a mix of courtyard and seaview rooms. All 30 bedrooms can be either double or twin and provide a

bright, spacious, and convenient space for golfers to spread out and relax.

The restaurant and bar area also enjoys floor to ceiling windows offering unbeatable views of the golf course, Gullane Hill and across to the Kingdom of Fife. In summer the courtyard is a beautiful suntrap.

Whether it is a full Scottish breakfast before your round, a hearty lunch post-round, or a few pints followed by dinner, the restaurant has a friendly and homely feel, and is proud to serve up quality local fare.

GARLETON LODGE



Centrally located on the hilltop between Haddington and Gullane, with spectacular panoramic views across Edinburgh, the Forth and surrounding East Lothian countryside, Garleton Lodge makes an ideal base for playing Scotland's Golf Coast.

All East Lothian courses are within 20

minutes and those in the Borders and Northumberland are no more than an hour away with both Edinburgh and the airport also easily accessible.

Garleton Lodge offers guests a choice of six en-suite rooms together with bar/lounge, restaurant and spa offering a wide

range of holistic and therapeutic treatments (including sports massages) together with hot tub and relaxation room. Voted as Tripadvisor's **No.1 Best Value Place to Stay in East Lothian**, Garleton Lodge offers a range of Stay & Play golf packages or let us know which courses you wish to play and we will happily arrange an itinerary for you.

Garleton Lodge, Haddington, EH41 3SL

t +44 [0] 1620 826256

w garletonlodge.co.uk
e booking@garletonlodge.co.uk

THE LEDDIE



The Leddie is the heart of Aberlady, the pretty East Lothian town. Surrounded by golf courses and only 30 minutes from the centre of Edinburgh, The Leddie is bustling with both locals and international visitors. A warm welcome, a hearty meal and a comfortable bed are the key ingredients for this recently refurbished and remodelled hotel.

The 27 stylish and sophisticated rooms vary from cosy to the cottage suite. Golfers will enjoy their comfort and luxury, the perfect environment to put your feet up after a day on the course. L'Occitane toiletries, slippers, bathrobe and Nespresso machines add to the charming and characterful rooms.

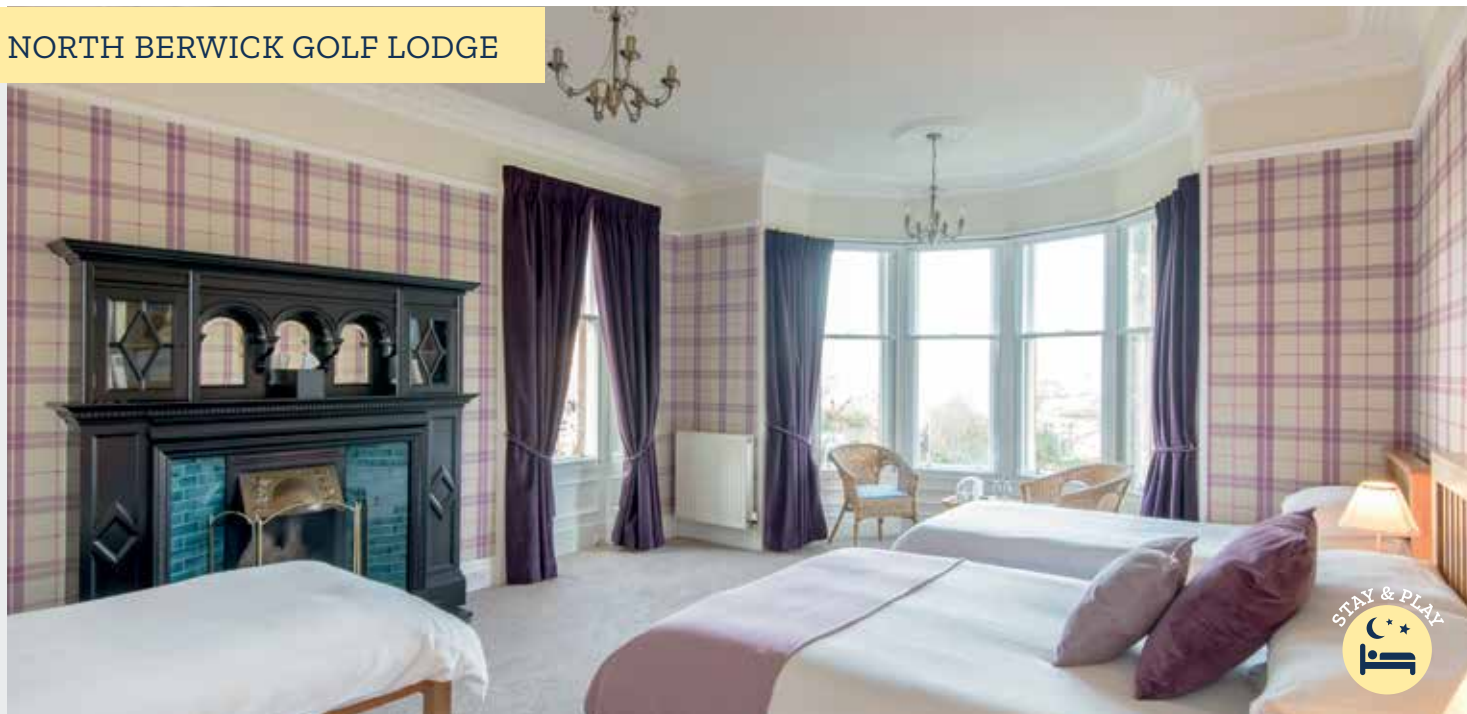
Food and drink are key at the Leddie. Local and seasonal produce from land and sea combine to create a sumptuous and appealing menu. A glass of fine wine, or a pint of local ale are the ideal accompaniment, and once again demonstrate The Leddie's finest qualities.

The Leddie,
W Main St, Aberlady, EH32 0RE

t +44 [0] 1875 440644

w theleddie.com
e hello@theleddie.com

NORTH BERWICK GOLF LODGE



The perfect base for golf in East Lothian, where the golfer is assured of a warm Scottish welcome, offering luxury accommodation for groups of up to 12.

Close to the beach and town centre, a five-minute walk to North Berwick West Links and a five-minute drive away from Muirfield, Renaissance and Gullane. A luxury two-bedroom Cottage is also available.

North Berwick Golf Lodge,
53 Dirleton Avenue, North Berwick, EH39 4BL

t +44 [0] 1620 890064

w northberwickgolflodgebb.co.uk
e emma@northberwickgolflodge.co.uk



Set in 550 acres of beautiful East Lothian countryside, Archerfield not only has two spectacular golf courses, it also has an array of accommodation, as well as Fletcher's Cottage Spa.

The accommodation varies from intimate rooms for two, to catering for groups of 137.

Archerfield House itself is a 17th century Grade 1 listed building and can sleep up to 30 people. Adjacent to the house are the Pavilion Suites which can sleep a further 24.

In the extensive grounds are nine lodges which are a mix of three- and four-bedroom properties. The Marine Villa can sleep a

maximum of 10 and has the luxury of 28 acres of exclusive waterfront.

The Boathouse and the Cottage complete the options, both with spectacular views of the Firth of Forth. The clubhouse is not far from all of them, where quality local produce is the order of the day.

MARINE NORTH BERWICK



The iconic Marine North Berwick is perched majestically alongside the West Links of North Berwick Golf Club. Overlooking the Bass Rock and only a short walk from the town centre and North Berwick's famous beaches, the Marine has recently undergone a full renovation and refurbishment.

Marine & Lawn, the new owners, have respectfully and subtly taken the Marine, 'The Grand Old Lady', back to its luxury Victorian roots. Its 84 bedrooms have a Scottish linksland colour theme, with greens, blues and ochre. Meanwhile, the Lawn restaurant celebrates Scottish produce with outstanding beef, local game and seafood. The Bass

Rock Bar is the place to be seen and the ideal venue for a post-round cocktail, including the Highland Park based 'Young Tom Morris'.

Non-golfers and golfers in need of relaxation can head to the Spa where the hotel has teamed up with French skincare brand Caudalie.

NO.12 HOTEL & BISTRO



No.12 Hotel & Bistro is a unique combination of comfortable and homely accommodation, alongside a lively restaurant. No.12 is family owned, welcoming groups of all sizes.

Located in the heart of North Berwick, the hotel is just off the high street, so benefits

from its proximity to shops, pubs, and bars, and is close to the beaches, aswell as the East and West Links. It is an ideal location for golfers, a 5-minute walk to North Berwick and the Glen Golf clubs, aswell as a short drive to the remaining 19 golf courses on Scotland's Golf Coast.

The hotel has 11 en-suite bedrooms and can accommodate up to 22 guests. There is a mix of single, twin, double, triple or family rooms with each room having either a bath or shower. For dining, favourites include mussels and the famous North Berwick lobster.

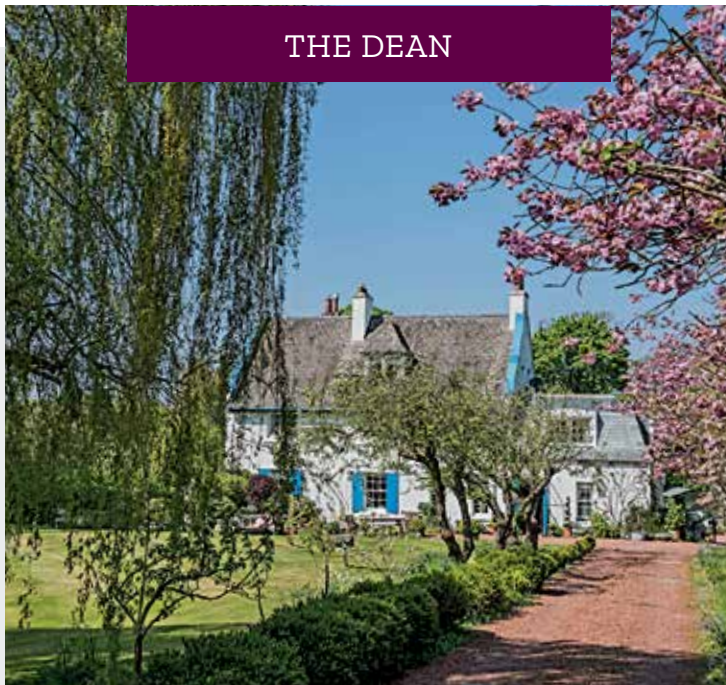
PAPPLE STEADING



The beautiful and extensive grounds of Papple Steading are home to four properties - The Farmhouse, Grieve's Cottage and two Bothies. Whether staying as an individual or exclusive use, Papple Steading offers tranquillity, woodland, luxury, table tennis, TV snug and more.

The interiors are an elegant mix of contemporary styles, with Victorian antiques sitting alongside locally produced artisanal log tables and seating. Sleek polished floors combine seamlessly with sumptuous wallpaper, whilst in the bedrooms there are vegan duvets and pure cotton sheets.

Nestling in the foothills of the Lammermuir Hills, Papple Steading, shortlisted for Scotland's 2023 Architecture Award, is an ideal central location for a golf trip. Edinburgh and its airport are only 45 minutes away.



THE DEAN

The Dean, bordering the Longniddry golf course, is a beautiful three-story listed property set in lovely gardens with magnificent views over the Firth of Forth.

The three bedrooms are spacious and warm, of which two are twin bedded and two are en-suite. Breakfasts are freshly cooked with homemade jams, free range eggs, the Dean's own fruit and local vegetables.

The Dean, Dean Road,
Longniddry, EH32 0PN

t +44 [0] 1875 853272
w thedeanbedbreakfastlongniddry.co.uk
e caroline.rede@yahoo.co.uk



THE DOLPHIN INN

The Dolphin Inn is a newly opened retro vintage styled hostel in the centre of Dunbar that suits those looking for something a little different.

With consistent five star reviews the Dolphin challenges conventional thinking of hostel accommodation. With eleven bedrooms the Dolphin Inn offers a mix of ensuite doubles, twins, doubles, and a flexible bunk family room.

The Dolphin Inn, 2 Queen's Road,
Dunbar EH42 1JZ

t +44 [0] 1368 868427
w dolphindunbar.com
e info@dolphindunbar.com

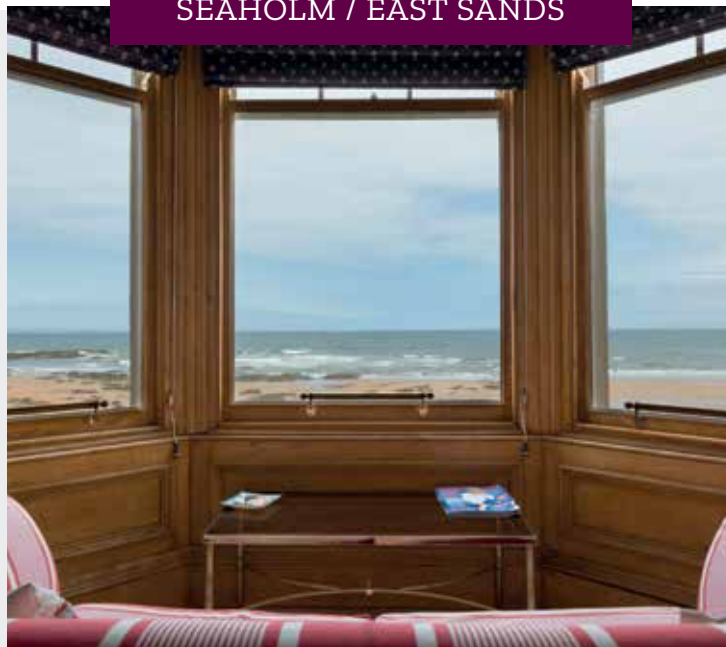
DUNMUIR HOTEL



The Dunmuir has 20 stylish en-suite bedrooms from small standard doubles to their lovely deluxe rooms. The hotel is also home to the award winning 1902 Bar and Grill, which has established a fine reputation for the quality of their cuisine and enjoys serving local and seasonal produce.

Dunbar is an excellent base for golf in the area.

SEAHOLM / EAST SANDS



Found on the beautiful East Sands seafront of North Berwick, the four-bedroom Seaholm bed and breakfast is an original Victorian three-story house, conveniently located for both the East and West Links golf courses and the centre of town.

The five-bedroom East Sands self-catering property is situated next to Seaholm also affording beautiful views of the Bass Rock from its spectacular bay windows.

Dunmuir Hotel, 11 Newhouse Terrace,
Queens Road, Dunbar, EH42 1LG

t +44 [0] 1368 862033
w dunmuirhotel.co.uk
e info@dunmuirhotel.co.uk

Seaholm / East Sands,
24 Melbourne Road,
North Berwick, EH39 4LB

t +44 [0] 1620 895150
w seaholm.co.uk



A GOLF REGION
LIKE NO OTHER

25 courses,
365 days a year,
1 Scotland's Golf Coast



18 HOLES OF HISTORY ON THE COAST

EAST LOTHIAN. IT'S WHERE IT ALL BEGAN! SURE, THERE ARE SOME DOUBTERS, BUT WE ALL KNOW GOLF BEGAN IN SCOTLAND!



Dunbar



Kilspindie

Documentary evidence records golf being played on the Musselburgh Old course in 1672, 350 years ago this year. Mary, Queen of Scots reputedly played here in **1567**.

In **1744**, the Gentlemen Golfers of Leith, later named the Honourable Company of Edinburgh Golfers wrote the original rules of golf.

In **1794** the first golfing organization is recorded when a body known as The Dunbar Golfing Society set down its rules and listed 27 members.

In **1832** the North Berwick Golf Club was formed. The 'West' links was then only six holes, so medals were played over three rounds.

Ben Sayers, along with James Braid, laid out the original nine-hole Rhodes Links in **1894**, now part of the Glen Golf Club in North Berwick.



Golf in Gullane dates to **1650** when the weavers of Dirleton played the weavers of Aberlady annually on Old Hansel Monday, the first Monday of the year.



The Old Club Cup at Royal Musselburgh is the oldest trophy still competitively played for in the world, with the first competition recorded in **1774**.



Thanks to Robert Gay of Musselburgh in **1829**, the golf hole is 4.25 inches wide. The width of a drainpipe, it was used to make the hole stable.



Musselburgh Old was one of the three founding courses of the Open, holding the event six times between **1874** and 1889.

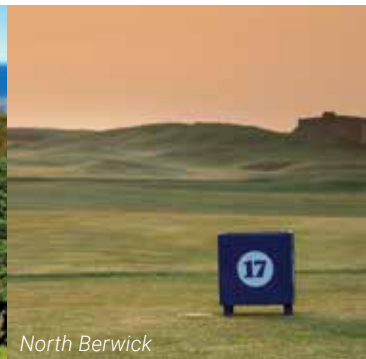




Musselburgh Links



Longniddry



North Berwick

The original Luffness Golf Club moved to land to the west of its original course, known now as Kilspindie Golf Club from **1899**.

11

Royal Musselburgh was designed by five-time Open champion, James Braid. Braid died in **1950** having designed over 250 courses, also including Carnoustie and the King's course at Gleneagles.

13

The Tom Doak designed Renaissance Club was opened in **2008**. The Renaissance has hosted the Scottish Open from 2019 to 2022. 2022 was the first time the event was co-sanctioned with the DP World Tour and the PGA Tour.

15

In **2017** Kilspindie Golf Club celebrated its 150th anniversary. The club was originally formed as Luffness Golf Club in 1867, the 35th registered golf club in the world.

17

10

Golf at the original 'Luffness Golf Club' was played on land behind the Gullane Hill until **1894**, now part of Gullane Golf Club.

12

In **1921** at Longniddry, James Braid and Ted Ray played against JH Taylor and Abe Mitchell in the club's inaugural match. The man on top of the Ryder Cup is Abe Mitchell.

14

Archerfield opened the Fidra golf course in **2004**, named after an island off the coast. Robert Louis Stevenson's cousins, David and Charles designed the lighthouse on the island, and Fidra is reputed to have inspired Treasure Island.

16

In **2013**, Muirfield, the Honourable Company of Edinburgh Golfers, hosted the Open for the 16th time. Only the Old Course and Prestwick has held the Open more times.

18

The AIG Women's Open was held at Muirfield for the first time in August **2022**.

ARCHERFIELD LINKS

Fidra	GENTS	par 72	6968 yds	LADIES	par 72	6201 yds
Dirleton	GENTS	par 72	6946 yds	LADIES	par 72	6133 yds



Archerfield Links is a relatively new golf experience on Scotland's Golf Coast, with two courses, the Archerfield Performance Centre and a selection of accommodation. However, golf has been played on the Archerfield Estate for centuries, with the Fidra and Dirleton Links now offering a challenging contrast of style.

The Fidra Links

The Fidra Links is a unique mixture of pine forest and fast-running links. The sweeping fairways and receptive greens wind their way from the clubhouse to the beach and back again, with run-ups to the greens allowing plenty of bump and runs.

The Dirleton Links

On coastal land, DJ Russell has created the Dirleton Links. It's a modern-day expression of a traditional Scottish links with fairways bounded by undulating gorse mounds, over 60 menacing bunkers, and tricky swales to protect the greens.



Craigielaw opened in 2001 and is inspired by the great links golf courses of the United Kingdom. Designed by world-renowned links course architects Donald Steele & Co., Craigielaw truly offers a golfers' paradise. The 18 holes are joined by a 6-hole par 3 course, grass driving range, the Titleist National

Fitting Centre and the 30-bedroom Lodge accommodation. Craigielaw's hard, fast greens need precision approach shots and, as with all good Scottish links courses, there are strong bunkers protecting the putting surfaces. Craigielaw's location overlooking Kilspindie Golf Club, the Forth of Firth and Gullane Hill is spectacular,

but this prominent position brings the difficulty of the wind. Craigielaw has hosted numerous Championships, most recently the Scottish Senior Open in 2018 and in 2019, when 2006 Open Champion, Paul Lawrie prevailed. A post-round pint overlooking the Forth is a popular activity.



Hugging the coastline at the mouth of the Forth and overlooking the North Sea, Dunbar's narrow strip of land offers a traditional and fun links golf experience. With a proud history stretching back to 1856, the course was perfected over 150 years by three giants of the game, Old Tom Morris, James Braid and Ben Sayers.

Blessed with a reputation for abundant sunshine the course lives long in the memory of all who play it, heading out along the old red sandstone deer park wall towards hole 10, then turning back home along the shoreline.

Many of the holes are dominated by the proximity of the sea and there are plenty

of opportunities to score well with the prevailing wind with you going out.

Dunbar has hosted the Scottish Amateur Open, British Boys' Championship and final Open qualifying, demonstrating its Championship reputation.



This is a beautiful and secluded 9-hole golf course set in gently undulating parkland and close to the picturesque village of Gifford. With the course framed by the Lammermuir Hills and bounded by mature woods and farmland, Gifford demonstrates the variety and versatility of Scotland's Golf Coast.

The course was laid out in 1904 and has a well-deserved reputation for quality maintenance and greens of the highest standard. Subtle improvements are carried out annually and the recently renovated tees and bunkers are a testament to that ongoing vision. The clubhouse is small, but comfortable, totally in keeping with a 9-hole

course and the original architecture has remained unchanged for years.

As a relaxing and fun break in your golf schedule, or for extra golf in the afternoon after a links course in the morning, Gifford is the perfect option.



The 'East Links' is a tricky combination of seaside links and headland holes, where the game has been played as far back as the 17th century. The current course is over 100 years old, with the original design provided by five times Open Champion James Braid and fellow professional Ben Sayers. The Glen is a varied, fun and inviting golf course,

benefitting hugely from its spectacular location perched above the beach and rocky outcrops overlooking the Bass Rock.

Elevated tees and greens throughout the course mean that careful club selection, and confidence in iron play is vital.

Hole 12 is particularly breath-taking. From the tee you can take in the view, whilst awaiting below is a green carved into the coastline. From hour to hour the conditions will change, with a wedge in the morning leading to a 3-wood in the afternoon.



Golf has been played at Gullane for more than 350 years. Today, it is one of Scotland's most prestigious member clubs, mixing the finest tradition with some of the most admired natural links' land in the world. Gullane is blessed with superb turf, a climate that allows year-round golf and three golf courses that offer their own unique test.

Gullane No.1

Gullane No.1 (1884) has a long history of hosting national and international championship golf events. Carved into the ancient links turf, pot bunkers, wispy grasses and smooth-running greens offer a superb test for the avid golfer.

Add to that the fabulous views and you have one of the world's most cherished golfing experiences.

Gullane No.1 regularly appears in the Top 100 rankings in both Great Britain and Ireland and World editions and hosted the Scottish Open in 2015 and 2018.

No.2	GENTS	par 71	6385 yds	LADIES	par 73	5566 yds
No.3	GENTS	par 67	5134 yds	LADIES	par 68	4793 yds



Gullane No.2

Gullane No.2 (1898) was laid out by the legendary Willie Park Jr. Running alongside No.1 for the first seven holes, the course sweeps down to a nature reserve next to Aberlady Bay before turning back towards home and the visitors' clubhouse. The beauty of the coastline and the challenge

of the layout create an unforgettable round that epitomises links golf in Scotland.

Gullane No.3

Gullane No.3 was also designed by Willie Park Jr in 1910. It may be the shortest of the three courses, but it is a charming test based

on shot-making skills rather than power. Of all the courses, Gullane, No.3 enjoys some of the best views across Aberlady Bay to Edinburgh and the Firth of Forth beyond. This is no soft option, despite a lack of yards the course still needs strategic management, with true running greens and numerous bunkers to be avoided.



Lying hidden among the nature reserve of Aberlady Bay, the quaint village of Aberlady, and the Firth of Forth, Kilspindie Golf Club is one of the finest hidden gems any golfer can find.

One of the oldest golf clubs in the world, the current course was designed and first

played in 1898. Retaining a wonderful charm and offering a great warmth of welcome, Kilspindie is a traditional Scottish seaside links designed by Willie Park Jr. and Ben Sayers.

Kilspindie is a medium length course, with quick, deceptive greens and well-defined

fairways. Several holes border the shoreline, enjoying magnificent coastal views, but open to the sternest of elements from the Forth. In the distance, you can see the profile of Edinburgh, its castle, and the long extinct volcanic cone of Arthur's Seat. The clubhouse retains many of the original features and is a true celebration of the history of golf.



Longniddry is an unusual combination of woodland and links terrain, with stunning sea views on many of the coastal holes.

The layout of the course was entrusted to Harry S. Colt in 1921, one of the foremost golf architects of the day. There have been several alterations to Harry Colt's original

layout, notably in 1936, when James Braid was invited to advise on the second hole, as well as post-war by Phillip Mackenzie Ross. With no par 5s for the men and eight par 4s measuring over 400 yards, Longniddry offers a fair test of golf for both members and visitors alike.

Formerly an Open qualifying course, Longniddry Golf Club was honoured to be invited to host the qualifier for the Scottish Open in 2018 & 2019 as well as the Scottish Girls Open Championships in 2023.



Luffness New Golf Club lies in the heart of the renowned East Lothian golfing country between Aberlady & Gullane.

Founded in 1894 and designed originally by Old Tom Morris, Luffness New offers a quintessential links golf experience. The course has seen small alterations over the

years under the guidance of many great golfing greats including Willie Park and James Braid and has all the hallmarks of a classic links. The fairways are protected well by bunkers, whilst approaches to the greens have bumps and hollows that call for a subtle touch and imagination.

Although you do not see the sea much, the course is located on the truest of links turf, with the course slightly protected from the wind by Gullane Hill, depending on its direction. Luffness New was designed for a mentally strong and strategic mind, instead of pure force.



Muirfield is home to The Honourable Company of Edinburgh Golfers, one of the oldest clubs in golf. It began in Leith in 1744, before moving to Musselburgh and finally in 1891 to Muirfield.

It is a renowned venue to Major championships, having hosted 16 Opens,

the last in 2013 when Phil Mickelson became Champion Golfer of the Year. Originally designed by Old Tom Morris, the layout has remained largely unaltered since 1926. The course is designed so that, during a round, holes will be played both against and with a following wind, with two loops of nine both returning to the

clubhouse. Built in 1891, the clubhouse is full of character, with all the main public rooms looking out onto the course.

Muirfield is truly one of the best golf courses in the world, regularly featuring in the World's Top 10.



This championship parkland course was designed by James Braid and is a true test of golf even for the most accomplished golfer. Opening in 1938 with a 4-ball between Percy Alliss, Henry Cotton, Alf Padgham and James Braid, the course has hosted many amateur and professional championships over the years including

the Scottish Professional Championship on two occasions. The Royal & Ancient Golf Club also chose the course as host of the Regional Open Qualifier from 2006 until 2010. The R&A were obviously impressed and decided to include the course as a Local Final Qualifier Venue in 2013 for the Open at Muirfield.

Situated on the outskirts of Scotland's capital city, Edinburgh, the mature woodland defines the fairways and the greens are renowned for their good condition. The Craigie burn cutting across the course adds to the difficulty.

MUSSELBURGH LINKS, THE OLD COURSE

GENTS	par 34	2968 yds
LADIES	par 34	2665 yds



2022 saw Musselburgh Links, The Old Course celebrate its 350th anniversary.

This nine-hole, par 34 links golf course, located in the heart of Musselburgh, will take you back to where golf began. This historic golf course was an original Open championship venue hosting the

competition on six occasions between 1874 and 1889, with Willie Park Junior winning on two occasions.

Musselburgh Links is reputed to be the oldest playing golf course in the world, with documentary evidence dating back to 1672. There are also claims that Mary

Queen of Scots played on Musselburgh Links in 1567. For a unique golfing experience, you can hire hickory golf clubs and play the game as it was in The Old Golf Course's heyday. The unique nature of the course is further enhanced by its location in the middle of Musselburgh Racecourse.



Formed in 1832 the North Berwick Golf Club, the West Links course is one of the most historic in Scotland. Golf has been played over the same piece of land since well before the club was formed, only the R&A has played over the same piece of land for longer.

A classic seaside links course with stunning views of the Firth of Forth, it is a fair and fun test of golf for all players. It is a true championship course having hosted many events over the years, including Final Qualifying for The Open on six occasions. Playing the course is all about imagination with the sea in play

on six holes, with famous walls in the middle of fairways and even in front of the 13th green. All these hazards add to the joy of playing the West Links and are an important part of the club's reputation.



Royal Musselburgh Golf Club is the sixth oldest golf club in the world. The Old Club Cup, which has been awarded at Royal Musselburgh Golf Club since 1774, is the oldest trophy still competitively played for in the world.

For their first 150 years, the (Royal) Musselburgh Golf Club played over the Old Course at Musselburgh, sharing it with other old and prestigious clubs, most notably, for the last years of the 19th Century, the (Royal) Burgess, The Honourable Company of Edinburgh Golfers and Bruntsfield Links Golfing Society.

Designed by the famous Open champion, James Braid, Royal Musselburgh Golf Club sits on an elevated position overlooking the Firth of Forth. It is a picturesque parkland course kept in immaculate condition and is a treat to play, especially when you are coming into the home stretch on the last five holes.

THE RENAISSANCE CLUB

GENTS	par 71	6746 yds
LADIES	par 71	5375 yds



The Renaissance Club takes pride of place on Scotland's Golf Coast and is a short hop from the beautiful town of North Berwick. The course enjoys picturesque views over the Firth of Forth, and despite its modern look, enjoys an amazing tradition.

The Renaissance Club has drawn on the experience of both local and traveling golfers alike, to refine the Scottish golfing experience. A Tom Doak designed links golf course provides a fair test for all abilities, with different tee lengths making it suitable for golfers of all levels. Included on site is the incredibly scenic halfway house and

holes with spectacular views across the Firth of Forth to Fife. It provides all that play the course memories for a lifetime. Members are assured a luxury welcome, with exceptional offerings on and off the golf course. The Renaissance Club remains proud host of the Genesis Scottish Open.



Winterfield is a gem of a course located in the popular seaside town of Dunbar. Situated right on the coast, you will find stunning sea views of the Firth of Forth, the Bass Rock and the Isle of May with the Lammermuir Hills as a backdrop.

It's a relatively short course in terms of distance, but don't let this fool you! There are 8 par 3's, but only one is less than 170 yards, making it challenging for even the very best. The first is a cracker. From the tee, it's a 220 yard carry over a ravine to reach the pin.

While you'll be put to the test on the opening nine, the rewards are plentiful on the back. With a memorable stretch of holes looking out to the Bass Rock and neighbouring Belhaven Beach, Winterfield is simply a special course.

MORE THAN GOLF ON THE COAST



With so much golf it is hard to see beyond the fairways and greens of Scotland's Golf Coast but East Lothian has a lot more to offer both the golfer and just as importantly the non-golfer - don't forget it is a holiday!

From historic castles and battle sites to the National Museum of Flight and the state-of-the-art Scottish Seabird Centre, East Lothian mixes the old and the new. Known as Edinburgh's Coast & Countryside, it is no surprise that the outdoors features heavily in non-golf activity. Spend an afternoon at the Musselburgh races, kite surf or surf on the Forth, or go trekking or horseback riding along country paths or sandy beaches.



No visit can be enjoyed on an empty stomach and East Lothian is also known as 'Scotland's Food & Drink County'. The region is proud of its food provenance, and visitors can enjoy locally raised meats, a bounty of fruit and vegetables, supplemented with locally caught seafood. A number of our members hold Visit Scotland 'Taste Our Best' accreditation – look out for the logo for the very best food experience!

All can be washed down with a pint of beer or cider from one of our local breweries or perhaps a local gin or a dram of malt whisky!



WHY GOLFERS CHOOSE THE BORDERS AND NORTHUMBERLAND

- ▶ With a spectacular coast, the golf courses benefit from their drier location on the east.
- ▶ The towns of Eyemouth, Berwick-upon-Tweed, Seahouses and Alnwick have an array of pubs, bars and restaurants.
- ▶ The Newcastle ferry is 55 minutes from Alnmouth Golf Club, and 90 minutes to Eyemouth Golf Club.
- ▶ Edinburgh Airport to Eyemouth Golf Club is 70 minutes.
- ▶ The two regions can be enjoyed on their own, or as part of a longer trip including Scotland's Golf Coast.
- ▶ The Holy Island of Lindisfarne is a short and unique walk across the sand when the tide allows.
- ▶ Northumberland boasts 70 castle sites to explore, so enjoy sightseeing once your round is complete.



MARSHALL MEADOWS MANOR



Marshall Meadows Manor is a stunning Georgian manor transformed into Northumberland's newest luxury hotel, restaurant and wedding venue. The 12 acres are within a stone's throw of Berwick-upon-Tweed.

A short-drive from Goswick Golf Club,

Marshall Meadows Manor is an hour and 20 minute's drive from Newcastle's ferry port. Scotland's Golf Coast's East Lothian courses are all within an hour, so the hotel is an ideal stop-off, or base for a golf trip.

The 27 elegant and grand rooms are all individually decorated and provide a unique,

luxurious feel. There is the Master Suite - with breathtaking sea views, as well as two junior suites, three premier rooms and twelve classic rooms. The stables feature three suites, as well as one additional junior suite. In the grounds, there are also five luxury pods with hot tubs.

Marshall Meadows Manor, Marshall Meadows
Berwick-upon-Tweed, TD15 1UT

t 44 (0)1289 331133

w marshallmeadowsmanor.co.uk
e info@marshallmeadowshotel.co.uk



With the backdrop of the Grade 1 listed 11th century Bamburgh Castle, the coastal classic, Bamburgh Castle Golf Club is one of the most scenic in Britain. The views extend past the castle to Lindisfarne, the Cheviots and the North Sea.

Newcastle and the ferry are only an hour and

ten minutes away, with Edinburgh an hour and forty-five minutes.

The course is the definition of entertainment. It may be short, but it's tricky. There are not many golf courses that start with two par 3s, followed by two par 5s.

George Rochester, the professional at Alnmouth, designed the course, opening in 1904. The par 68 has seen a few changes, but most of the existing design is in place. The natural ups and downs, contours and hollows come into play throughout the course, but play well, and there is a good score to be had.



The first golf course appeared on the links of Embleton Bay in 1900, before being redesigned by the legendary James Braid.

A traditional links course, guarded with bunkers and gorse, golfers need to judge the ever-changing wind direction as the course bends around the bay and back. After the

dogleg third, holes four to ten hug the coast in the direction of the castle.

Located in an 'Area of Outstanding Beauty', Dunstanburgh Castle Golf Club was originally opened to provide entertainment for guests at the nearby Dunstanburgh Castle Hotel. It was in 1919 that Sir Arthur

Munro Sutherland purchased the estate. In his plans were a remodelling of the original nine, followed by an extension to 18 holes. In 1920, James Braid began his input, however the course ultimately took another two decades to complete.

The well-drained land is a test for all abilities.



Located on the cliff tops of the spectacular Berwickshire coastline, Eyemouth is unique in that it is the only coastal course in the Scottish Borders.

Only 70 minutes from Edinburgh, and a little over an hour and a half from Newcastle, Eyemouth is Scotland's gateway golf course.

It is the 6th and 13th holes that receive the acclaim, but the course boasts 18 challenging holes that can be played year-round.

The 6th is in Golf Monthly's Top 100 Golf Holes in the UK, with the tee perched on one side of a gaping drop to the sea below.

Meanwhile, the 13th is Scotland's longest hole off the tiger tees, 656 yards to be precise. Designed in 1894, the course hugs the rugged coastline, mixing a links and parkland feel. A 9-hole course for over 100 years, the current 18-hole layout was unveiled in 1997.



Midway between Edinburgh and Newcastle, nestled amidst windswept dunes on a vast expanse of stunning Northumberland coastline, Goswick is a James Braid masterpiece where golf is played as it was meant — on true links land in all its glory.

This 134-year-old treasure is a little remote. However, that's one of the many attributes that makes it so special. Golfers who seek it out will be rewarded with an escape from reality to one of the 50 best courses in England (National Club Golfer) and one of the top 100 links in Great Britain & Ireland (Golf World).

It's also one of the world's few pure fescue links with fairways that deliver a lively bounce and greens that roll fast and true year-round.

No matter the level of play, it delivers a challenge and inspiration for all golfers.

PARTNERS

Golf tourism is extremely valuable to the regional economy. Alongside the golf courses and accommodation providers, we work in partnership with local businesses to promote their products.

The Scotland's Golf Coast brand offers the perfect advertising and sponsorship opportunity, and demonstrates the importance of our industry in East Lothian, the Borders and Northumberland.

To find out more about our marketing benefits, please email info@scotlandsgolfcoast.com.



'Gullane No1' Scottish Golf Photography

Scottish Golf Photography

w scottishgolfphotography.com
e info@scottishgolfphotography.com
t +44 [0] 7528 804860

- Photography and video of Scotland's best golf courses
- Fine art photo prints of Scotland's best golf courses
- On and off course photography of your group
- Bespoke photo books of your golf trip



TRANSPORT PROVIDERS

We are delighted to present the below taxi / transfer businesses who work with each of our Members to provide transportation services.

We hope this assists you both with planning your trip and during your stay on Scotland's Golf Coast.



A2B Private Hire

w a2btaxisnorthberwick.co.uk
e a2btaxisnorthberwick@aol.co.uk
t +44 [0] 1620 895000

- Golf Transfers
- Airport Transfers



ACS Taxis

w acstaxis.co.uk
e acstaxis@hotmail.com
t +44 [0] 1875 613 200

- Golf Transfers
- Airport Transfers



Silver Swan Travel

w silverswantravel.com
e info@silverswantravel.com
t +44 [0] 7817 623 980

- Golf Transfers
- Airport Transfers
- Whisky Tours



White 7 Edinburgh

w white7edinburgh.co.uk
e neil@white7edinburgh.co.uk
t +44 [0] 7803 753554

- Golf Transfers
- Airport Transfers



HOW TO FIND US

Getting to Scotland's Golf Coast could not be easier.

Located in the South East of Scotland, only 30 minutes from the capital city of Edinburgh, it could not be simpler to drive, fly or catch the train to golfing perfection.

travelinescotland.com

DRIVE

Scotland's Golf Coast is easily accessed from the A1, with Edinburgh only a 30-minute drive and Newcastle a 2 hour drive away. Once you have arrived, all golf courses and accommodation are located close together, meaning travel is efficient and simple, giving visitors more time to enjoy themselves!

TRAIN

On Scotland's Golf Coast, the towns of Musselburgh, Longniddry, North Berwick and Dunbar are all served by train stations. Regular trains from central London provide access to East Lothian in 4 hours.

FLY

Edinburgh (30 minutes), Glasgow (90 minutes), Prestwick (90 minutes), and Newcastle (2 hours) airports are all within easy reach of Scotland's Golf Coast. These airports are served by a number of national and international destinations.



WHAT WE OFFER EAST LoTHIAN



ACCOMMODATION

- 1 * The Lodge at Craigielaw
- 2 * Garleton Lodge
- 3 * North Berwick Golf Lodge
- 4 * The Leddie

- 5 Archerfield
- 6 Marine North Berwick
- 7 No 12 Hotel & Bistro
- 8 Papple Steading

GOLF COURSES

- 9 Archerfield Links
- 10 Craigielaw Golf Club
- 11 Dunbar Golf Club
- 12 Gifford Golf Club
- 13 Glen Golf Club

- 14 Gullane Golf Club
- 15 Kilspindie Golf Club
- 16 Longniddry Golf Club
- 17 Luffness New Golf Club
- 18 Muirfield

- 19 The Musselburgh Golf Club
- 20 Musselburgh Links, The Old Course
- 21 North Berwick Golf Club
- 22 Royal Musselburgh Golf Club
- 23 The Renaissance Club
- 24 Winterfield Golf Club



* Stay & Play Packages Offered
See page 6 for more information.



SCOTTISH BORDERS & NORTHUMBERLAND

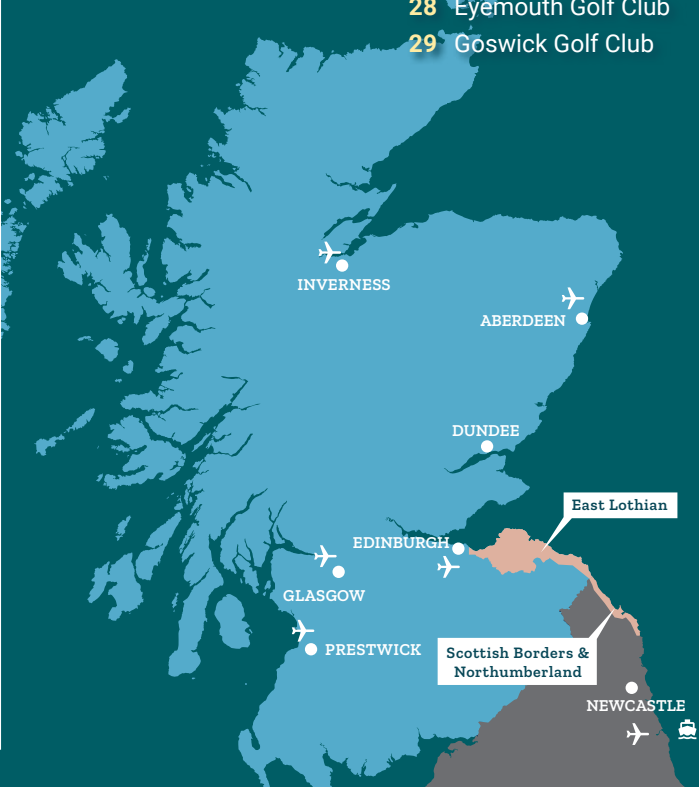


ACCOMMODATION

25 Marshall Meadows Manor

GOLF COURSES

- 26** Bamburgh Castle Golf Club
- 27** Dunstanburgh Castle Golf Course
- 28** Eyemouth Golf Club
- 29** Goswick Golf Club





SCOTLAND'S N^o1. GOLF DESTINATION



25 COURSES



22 OPEN CHAMPIONSHIPS



100 MILES OF COAST



WIDE RANGE OF ACCOMMODATION



ALL YEAR ROUND GOLF



SCOTLAND'S SUNNIEST & DRIEST REGION

